



RfQ_Urmul Seemant Samiti_2022-23

Pashupalan Suvidha Kendra for Migrating Pastoralists in Jodhpur

Request for cost quotation: Construction of water reservoir and Common Facility Centre under ELRHA supported *Pashupalan Suvidha Kendra* programme by Urmul Seemant Samiti

Dated: 7th May 2022

1. Brief Project Overview

Urmul Seemant Samiti is implementing the project - *Pashupalan Suvidha Kendra* for Migrating Pastoralists in Jodhpur. An innovation promotion and research programme supported by ELRHA, UK – the programme focusses on developing two models of privately-managed Common Facility Centres (CFCs) along pastoral routes enabling a package of basic support services for transhumant pastoralists in 2 villages of Jodhpur district in western Rajasthan to increase their resilience during periods of heat and cold waves.

Under the programme, we are setting up two water reservoirs to harvest rain water and two Common Facility Centre and make various services to pastoralists available throughout the year. Through this RfQ, Urmul Seemant Samiti invites quotations for the same.

2. About Urmul Seemant Samiti

www.seemant.org

With the aim to empower village communities towards self-reliance, Urmul Seemant Samiti has been working since 1994 in western Rajasthan to develop a safe and enabling environment for people that ensures that their right to health, education and employment is respected and realized without discrimination and exclusion, with special focus on children and women. Striving for development in the most distant and underdeveloped villages of Bikaner, Jodhpur, and Nagaur district to ensure that people are empowered to decide, design, implement and eventually self-finance the package of development services which are made available to them under different projects. The organisation has been working towards breaking barriers for promoting desert centric social innovations.



RfQ_Urmul Seemant Samiti_2022-23

3. Scope of Work & Deliverables

Under the programme, we're developing two rainwater underground water reservoirs and two Common Facility Centres at the programme locations – *Luna* village (Jodhpur District) and *Narayanpura* village (Jodhpur district) each. Techno-commercial proposals are invited from reputed & local General Contractors to construct two water reservoirs and CFCs. The details are as below:

1. Total area of CFC as per design – 2500 Sq Ft. There may be design alteration. Pricing should be provided for maximum 2500 Sq ft construction.
2. Total volume for water reservoir should be ~70000 litre. Total built area as per plan is 172 Sq ft.
3. This will be a turnkey project implementation. All the material, labour and other peripheral costs are to be included in the costs proposed

Deliverable:

1. 2 Water reservoirs at the pre-decided locations as per the specifications given in the annexures
2. Two Common Facility Centre as per the plan and specifications provided in this RfQ and additional details that shall be provided by the project architect during the implementation.

4. Preconditions

- a. Construction quality at various stages shall be monitored by the technical agency and any compromise on material or workmanship shall be taken into account for the final payment.
- b. Sites completion by 30th July 2022
- c. No subcontracting is permissible
- d. The service provider/vendor will be required to deliver services on site as instructed by the site engineers. All the transportation and other peripheral costs must be included in the quotation.
- e. No advance shall be released and the payments shall be linked with milestones. The final tranche shall be released after NOC from the technical agency post 30-days of site handover.

5. RFQ Timeline

Through this RfQ, Urmul Seemant Samiti invites quotations for providing various products and services as mentioned above. Vendor (s) may provide all or individual items, basis their competencies or authorisation.



RfQ_Urmul Seemant Samiti_2022-23

1. Quotation submission deadline: 23rd May 2022
2. Online submission is acceptable. Please email your proposals to the mail mentioned below. Hard copy of the proposal may be submitted to the address below, by hand or courier.

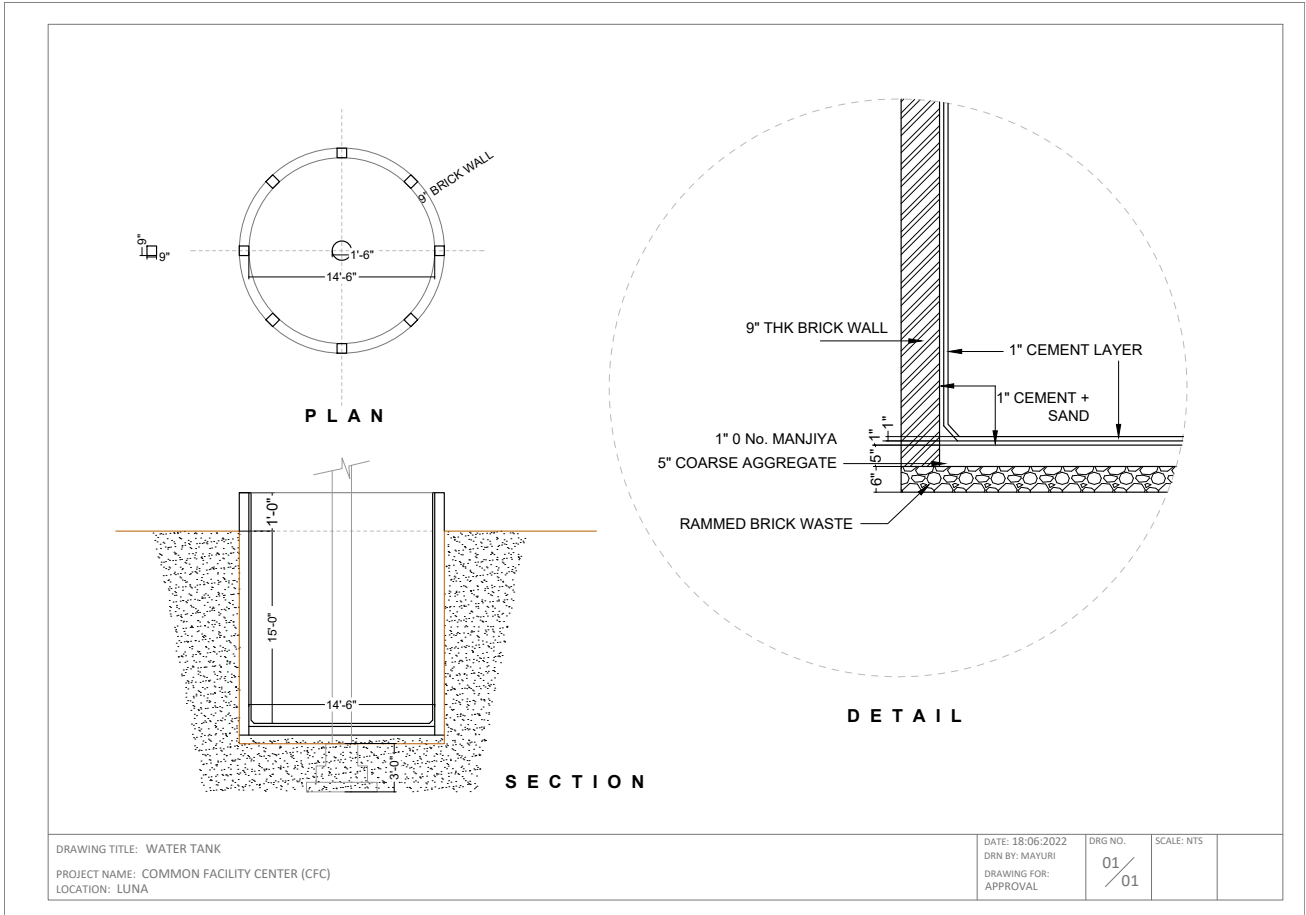
6. Principal Point of Contact

Procurement Nodal person; Email: procurement@seemant.org
Urmul Seemant Samiti, Urmul Campus, Near Grid Substation, Bajju village, Bikaner



RfQ_Urmul Seemant Samiti_2022-23

Annexure I: Plan of the water tank



WATER TANK (QUANTITY 70,000 LTR)				
Luna and Narayanpura, Rajasthan				
Material	Area	Unit	Material	Quantity
Excavation of foundation trenches with and depth as per design, including dressing of sides and ramming of bed where soil is loose with water, removing surface vegetation, placing excavated material wherever required and disposal of surplus.	2813	Cu.ft	nil	
Preparing of base up to 9" height with construction waste material including dressing of sides and ramming of bed.	150	Cu.ft	nil	

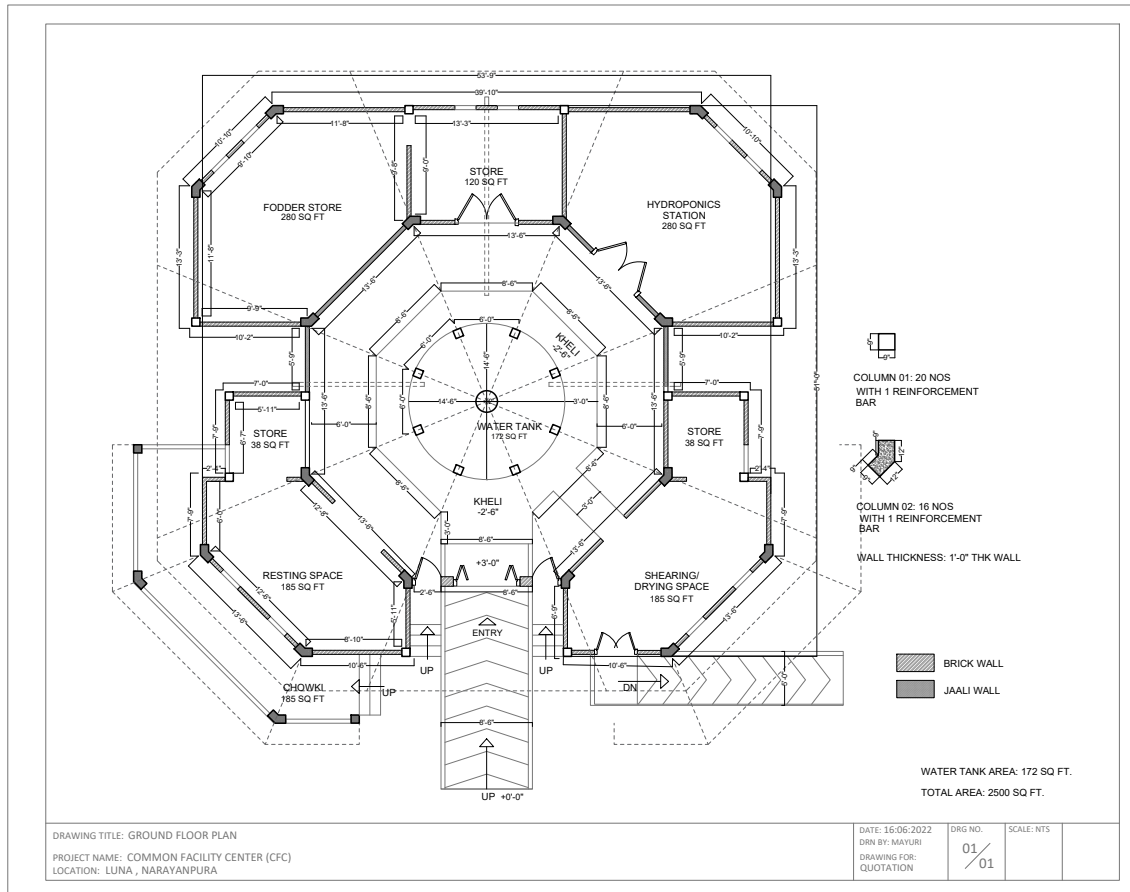


RfQ_Urmul Seemant Samiti_2022-23

Mass concrete base (PCC) of 5" thick binding layer (1:3:6 mix)	85	Cu.ft	Cement Sand	20 bags 138 ft3
9" thick Brick masonry wall in cement and sand mortar 1:4.	303	Cu.ft	Bricks	6540
			Cement	27bags
			Sand	145 ft3
18 mm thick internal cement plaster in two coats on wall and floor, under layer 12 mm thick cement plaster 1:5 (1 cement, 5 coarse sand) and top layer 6mm thick with cement plaster 1:3 (1 cement, 3 coarse sand) finished with sponge.	865	Sq.ft	Cement	17 bags
			Sand	90 ft3
Top slab 11" wide local stone slabs with cement mortar joints.	210	Sq.ft	Stone Slabs	32 nos
M.S manhole cover.	1	NO's	nil	
Handpump pumping system with piping and other expenditure,	1	NO's	nil	
Labour and Mason charges for 12 days.			nil	



Annexure II: Plan of the CFC



COMMON FACILITY CENTER						
Luna and Narayanpura, Rajasthan						
Material	Nos	Area	Unit	Brick	Cement	Sand
Excavation of foundation trenches including dressing of sides and ramming of bed where soil is loose with water, removing surface vegetation, placing excavated material wherever required and disposal of surplus. 18" nominal in width and 3' in depth.	nil	2952	Cu.ft			



RfQ_Urmul Seemant Samiti_2022-23

Backfilling of the trenches upto 1' height with construction waste material including dressing of sides and ramming of bed	nil	984	Cu.ft				
Plain concrete cement of 6" thick (1:3) below footing	nil	514	Cu.ft			70 bags	400 cu.ft.
Dry Masonry stone wall in foundation. Height 2' thickness 15"	nil	1000	Cu.ft				
Brick masonry column 9" X 12" Height: 9'	8	54	Cu.ft	62	496	3 bag	15.68 cu.ft
Brick masonry column 9" X 12" Height: 7'	8	42	Cu.ft	66	528	2 bag	11.84 cu.ft
Brick masonry column 9" X 12" Height: 12'	8	72	Cu.ft	122	976	4 bag	20.88 cu.ft
Brick masonry column 9" X 9" Height: 9'	12	61	Cu.ft	62	744	4 bag	18.36 cu.ft
Brick masonry column of 1' radius height 15'	1	12	Cu.ft		172	4 bags	16 Cu ft
M.S reinforcement bar 12 MM	nil	250	ft				
Brick jali walls 5" thick	nil	405	Sq ft	1000		4 bag	17 cu. ft
Timber batten for Thatch roof	24						
Thatch roofing	95 quintal	3215	sq. Ft				
Flooring area	nil	1826	Sq. Ft	55		2 bag	8 cu. ft
Timber doors	6	nil					
Brick wall masonry 5" thick in superstructure with both sides in plumb with mortar of ratio 1:4 (cement : sand) Height: 9'	nil	1404	Sq ft	6375		7 bag	97 cu. ft
MS mesh	1 Roll	352	Sq ft				

END OF DOCUMENT